

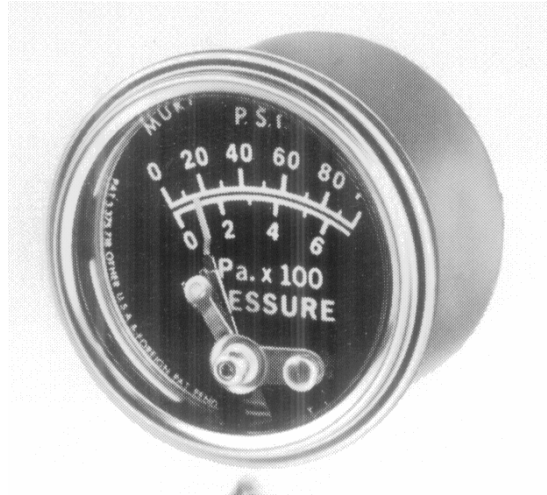
## Pressure Gauges – 20P Swichgage®

### Introduction

Panel mounted Murphy pressure gauges with contacts combine the functions of a pressure gauge and a pressure switch.

### Specifications

|               |                               |
|---------------|-------------------------------|
| Case          | Plated Steel or Polycarbonate |
| Sense Element | Beryllium Copper Diaphragm    |
| Dial          | Dual Scale - kPa & psi        |
| Accuracy      | ± 2.0 % FS                    |
| Connection    | 1/8 NPT Brass                 |
|               | Centre Rear Entry             |
| Contacts      | Pilot Duty, 2A 30V            |



### Features

- Rugged Panel Mount, made in the USA
- Marine, Automotive & Industrial engine protection devices
- High & Low contacts available
- Enables pressure monitoring and alarm or shut-down functions
- Built in pulsation damper

### Models Available

| Code    | kPa    | PSI   |
|---------|--------|-------|
| 20P-15  | 0/100  | 0/15  |
| 20P-30  | 0/200  | 0/30  |
| 20P-75  | 0/500  | 0/75  |
| 20P-100 | 0/700  | 0/100 |
| 20P-150 | 0/1000 | 0/150 |
| 20P-200 | 0/1400 | 0/200 |
| 20P-300 | 0/2000 | 0/300 |

20P Series are metal cased and are earth return.

A20 Series are PolyCarbonate and are wire return. (Marine use)

**Postal Address**  
Homersham Ltd  
P.O. Box 280  
CHRISTCHURCH 8015  
NEW ZEALAND

Phone: 03 3588309  
Phone: 0800 659888

Website: [www.homershams.co.nz](http://www.homershams.co.nz)

**Delivery Address**  
Homersham Ltd  
3 Homersham Place  
CHRISTCHURCH 8005  
NEW ZEALAND

Fax: 03 3582516  
Fax: 0800 659777

E-mail: [info@homershams.co.nz](mailto:info@homershams.co.nz)  
Section 3



Temperature  
Pressure