

## Pressure Gauges - General Purpose 63mm

### Introduction

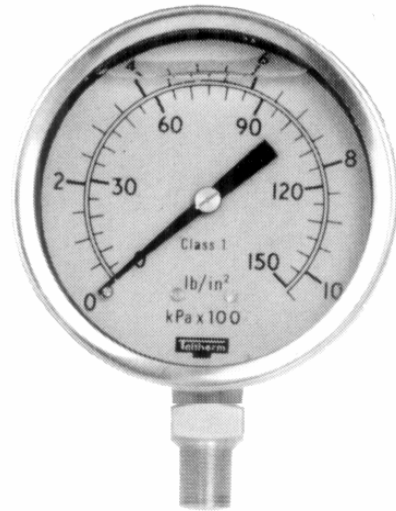
These Stainless Steel gauges are supplied dry but can be liquid filled which adds to the performance by keeping out moisture and reduces the negative effects of vibration and pulsation. These gauges have a variety of uses including Gas and Liquid service.

### Specifications

Case	Stainless Steel
Bourdon	Copper alloy
Dial	Dual Scale kPa & psi
Accuracy	± 2.0 % FS
Connection	¼ BSP Nickel Plated Brass Bottom Entry

### Features

- Manufactured in NZ
- Waterproof Stainless Steel Case
- Liquid filling - Optional



## Models Available

Code	kPa	psi
3063D01	-100/0	-30 in Hg/0
3063D18	-100/150	-30 in Hg/21
3063D19	-100/300	-30 in Hg/43
3063D20	-100/500	-30 in Hg/72
3063D21	-100/900	-30 in Hg/130
3063D22	-100/1500	-30 in Hg/217
3063D23	-100/2400	-30 in Hg/348
3063D02	0/100	0/15
3063D03	0/160	0/23
3063D04	0/250	0/36
3063D05	0/400	0/60

Code	kPa	psi
3063D06	0/600	0/87
3063D07	0/1000	0/145
3063D08	0/1600	0/232
3063D09	0/2500	0/362
3063D10	0/4000	0/580
3063D11	0/6000	0/870
3063D12	0/10000	0/1450
3063D13	0/16000	0/2321
3063D14	0/25000	0/3626
3063D15	0/40000	0/5802

**Postal Address**  
Homersham Ltd  
P.O. Box 280  
CHRISTCHURCH 8015  
NEW ZEALAND

Phone: 03 3588309  
Phone: 0800 659888

Website: [www.homershams.co.nz](http://www.homershams.co.nz)

**Delivery Address**  
Homersham Ltd  
3 Homersham Place  
CHRISTCHURCH 8005  
NEW ZEALAND

Fax: 03 3582516  
Fax: 0800 659777

E-mail: [info@homershams.co.nz](mailto:info@homershams.co.nz)  
Section 3



Temperature  
Pressure