

## Electromagnetic Flowmeter

### Introduction

The Yamatake MagNew series are a range of high quality electromagnetic flow meters. Featuring high accuracy, the MagNew meters are ideal where corrosive or high-solids fluids are used. No pressure loss (c.f. orifice plate), linear output and wide range.

### Specifications

Interface:	HART/DE, 4-20mA, Contact, Fieldbus
Display:	% Flow rate, Actual Flow, Totaliser
Sizes:	0.1 to 1.1 metre diameter
Conductivity:	3uS/cm minimum
Liner:	PTFE, ETFE, Hastelloy, Titanium, Zirconium et al

### Features

- Mirror Finished Sensor for long life & low maintenance (field proven better than the competitors)
- Better sensitivity. Lower conductivity fluids can be sensed (better than competitors)
- 2 & 4-wire versions available
- Open-Channel type (for weirs etc) available
- Low EM noise types HENRI available
- Flanged & Wafer types
- Remote or local display/converter

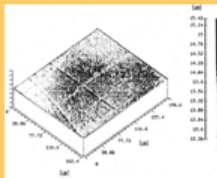


## Mirror Finish

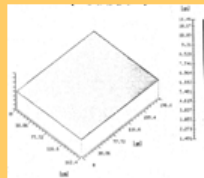
**Yamatake patented original lining manufacturing technology**

**Field proven with no scale buildup on mirror-finish Yamatake lining surface.**

**Conventional type surface roughness**



**MagneW 3000 PLUS surface roughness**



Customer's Comment:

**"We had removed the previous detector from the pipe every two weeks and cleaned it. Since we installed MagneW, we haven't clean it for six months. When cleaning it, we just wipe it."**  
Tokai Pulp

**Postal Address**  
Homersham Ltd  
PO Box 280  
Christchurch 8140  
NEW ZEALAND

Phone: 03 3588309  
Phone: 0800 659888

Website: [www.homershams.co.nz](http://www.homershams.co.nz)

**Delivery Address**  
Homersham Ltd  
3 Homersham Place  
Burnside  
Christchurch 8053  
NEW ZEALAND

Fax: 03 3582516  
Fax: 0800 659777

E-mail: [info@homershams.co.nz](mailto:info@homershams.co.nz)